

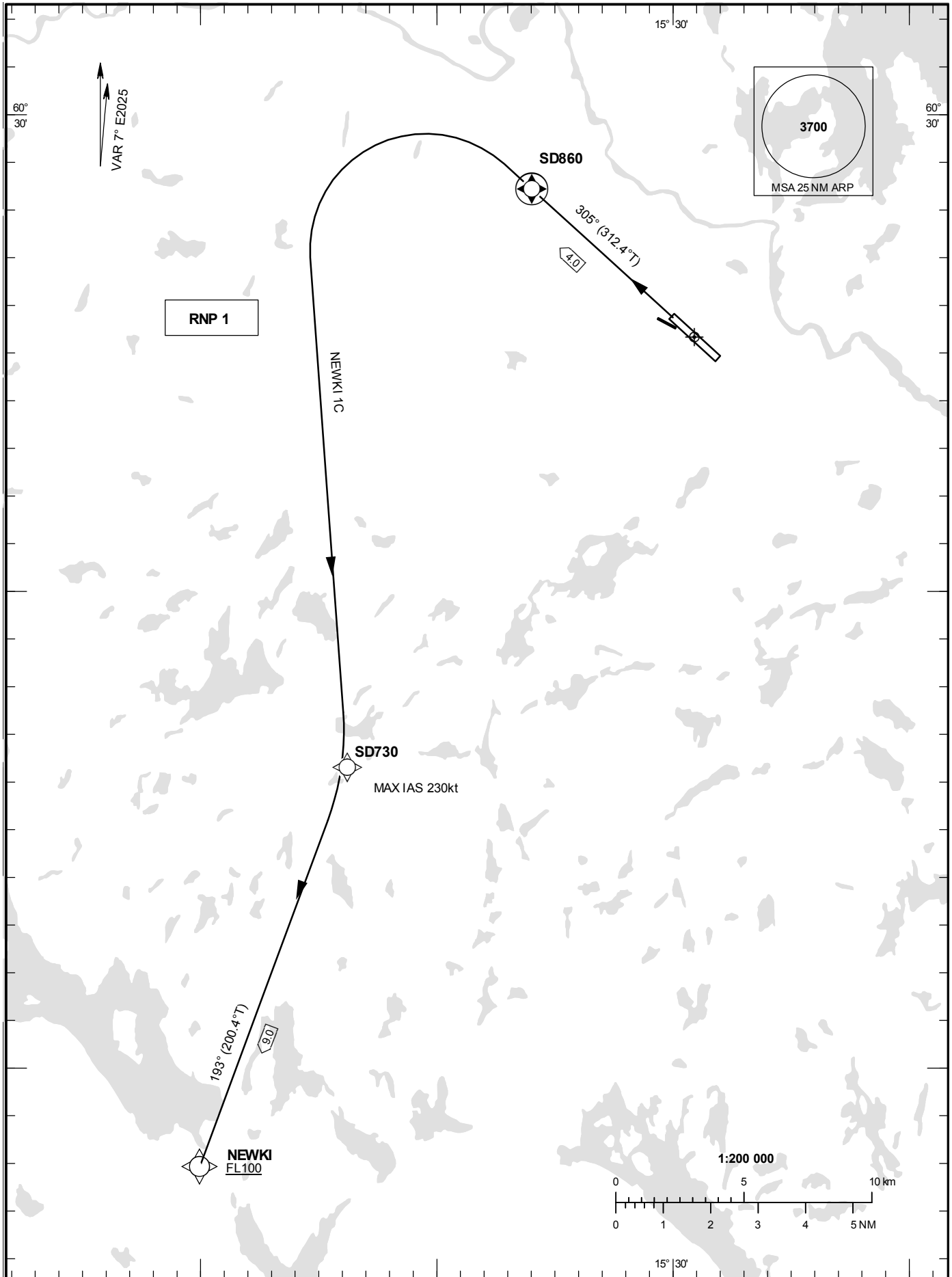
**STANDARD INSTRUMENT  
DEPARTURE CHART (SID) -  
ICAO**

HGT and ALT in ft  
BRG are MAG (True)  
TA 5000 ft AMSL

BORLÄNGE TOWER 127.305

**BORLÄNGE  
RNP RWY 32**

**NEWKI 1C**



CHANGE: Editorial

**BORLÄNGE**

**Prescribed Coding of RNP SID for RWY 32**

**NEWKI 1C**

Path Term	Waypoint Identifier	Fly-over	Course °M(°T)	Dist (NM)	Turn Dir	Rest Alts (ft AMSL)	Speed Limits (kt)	VPA/ RDH (°/ft)	Rec Navaid	Navigation Specification
CF	SD860	Y	305°(312.4°)	4.0	-	-	-	-	BOR	RNP 1
DF	SD730	-	-	-	L	-	-230	-	-	RNP 1
TF	NEWKI	-	193°(200.4°)	9.0	-	+FL100	-	-	-	RNP 1

SID instruction:     SD860 – SD730 (max IAS 230 kt, until SD730) – NEWKI (FL100 or above)